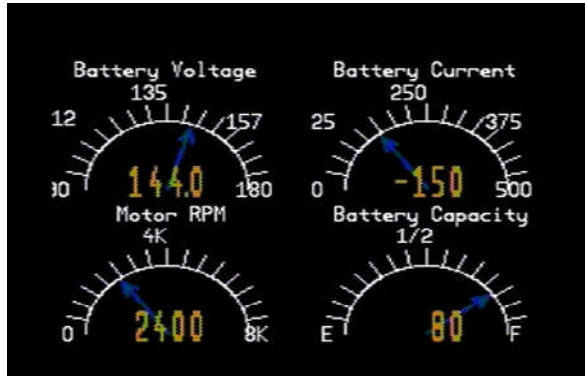


BLUE WINDOW

Electric Car Dashboard Computer

Look into your car's electrical system



Actual display

Features:

- Display of Amps, Volts, Motor Speed, Battery Capacity Available
- Video Output for Monitor or DVD Player
- Works With Battery Voltages Up to 250V
- Supports Popular Battery Chemistries
- Works with Any Capacity Battery
- Easy Installation--No Controls or Adjustments

The **BLUE WINDOW** is the only instrument you need to monitor your EV's electrical system. It gives you simultaneous display of the battery voltage, battery current, motor speed and battery capacity. The display features an easy to read, familiar analog format as well as a more precise digital format. The computer resides under the hood and requires only a few simple connections to the car's electrical system. The output from the computer is standard color composite video which can be displayed on a normal LCD monitor or DVD player.

The **BLUE WINDOW** can be used with battery voltages up to 250V. So it can be used from everything from an electric motorcycle to an electric bus. Lithium and Lead Acid batteries are supported. Installation is simple! Just connect 12V, the main battery voltage, the current shunt (500A=50mV—not included) and your monitor; and you are good to go! No adjustments or calibration is required.

Information about the battery type, voltage, and capacity are programmed at the factory but can be changed with the field programming kit. This kit has a USB cable which can be used to get a data stream of the data shown on the screen.



Typical Installation With DVD Player

ELECTRIC BLUE

Electric Blue Motors, Inc.

4402 E. Huntington Dr. Suite 100 Flagstaff, AZ 86004

www.electricbluemotors.com

928-526-1590

Specifications

Items Displayed.....	Voltage, Current, Motor Speed, Battery Capacity
Computer Power	8-20V, 20mA
Battery Voltage	36-250V
Shunt Input	500A = 50mV
Tachometer	0-8000 RPM
Battery Types Supported	Flooded Lead Acid, Gel/AGM Lead Acid, Lithium
Video Output	Composite Video, color, NTSC RS-170
Programming Port	Asynchronous Serial, TTL levels, 115200,n,8,1
Package Contents	Computer, video cable, shunt wires, battery temperature probe, magnetic pickup, magnet, manual

Ordering Instructions

When ordering the please specify the Battery Voltage, Amp Hour Rating, and Battery Type. The **ELECTRIC WINDOW** is custom programmed for your battery. This Programming is done by us or you can do it with our field programming kit.

Warranty

The **ELECTRIC WINDOW** is backed by a 1 year warranty. If it breaks within a year of purchase, just send it back and we'll fix it for free!